

Audi RS e-tron GT

Ride-on

QLS-6888



Children electric car
Installation and Operation Instructions
Stimulation car model
System driven by remote control
Forward, backward and steering operations by remote control
Forward and backward operations by manual shift
Steering wheel's music function
Techniques of volume regulation and MP3 amplification function
Battery power display

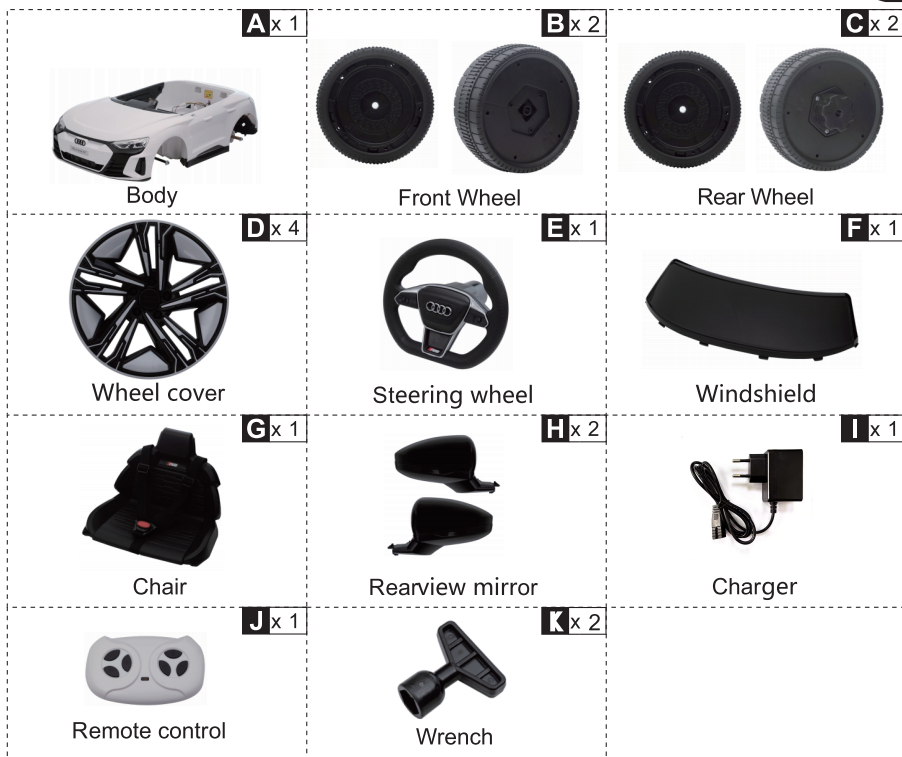
*Max weight: **25** kg.

Officially Licensed by AUDI AG



IMPORTANT, RETAIN FOR FUTURE REFERENCE: READ CAREFULLY

ASSEMBLY INSTRUCTION



Product Specifications :

Battery: 10.8V5AH

Drive Motor: 12V390*2(18000RPM)

Steering Motor: 12V380*1(5600RPM)

Suitable age: 37-95months

Maximum weight: 25kg

Car Size: 103*58*41cm

Speed: 3-5km/h

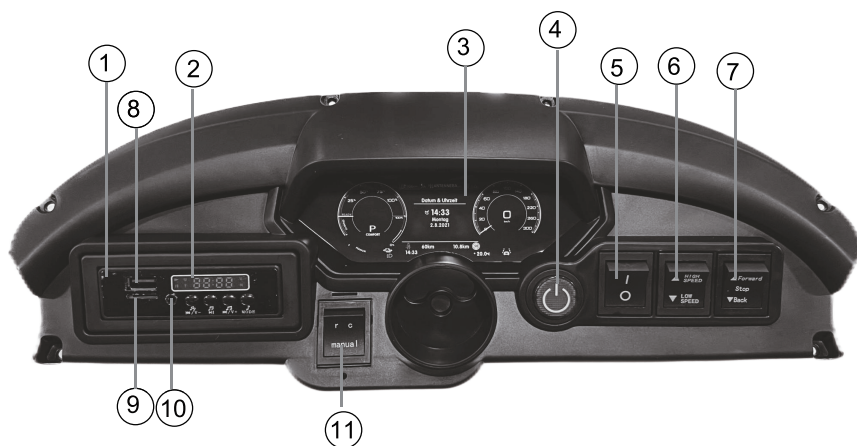
Hours of Charging: 5-6 hours

Charger: Input: 100V-240V 50/60HZ

Output: 12.6V1A

Remote Control Battery : AAA1.5V*2(not provided)

Function



Function indication

- | | |
|-------------------|-----------------------|
| ① Multi- Media | ⑥ Speed switch |
| ② Voltage display | ⑦ Forward Stop Back |
| ③ Dashboard | ⑧ USB |
| ④ Power switch | ⑨ TF |
| ⑤ Light switch | ⑩ MP3 |
| | ⑪ Control mode switch |

Description of control mode switchover



Mode 1: remote control.

In this mode, only adults can use the remote control to control the forward, backward and steering of the product, and the foot switch cannot control the product.

Mode 2: manual control.

In this mode, the forward, backward and steering functions of the product can only be operated by the children themselves. Select the forward or backward gear, step on the foot switch, control the product forward or backward, and manually operate the steering wheel to control the steering.

Operation method of mode switching:

Find the mode switch on the dashboard, under the steering wheel, It has a transparent lid and is locked with a screw, requiring parents to open it with a screwdriver, turn the switch to gear "r c" for remote control mode, and turn the switch to gear "manual" for manual control mode.

Remote Control Function and Instructions

- Never switch forward and backward operations in the moving, or the gear box and motor will be damaged.
- Use the remote control with battery.
- Only the baby's legal guardian can use the remote control.
- The product is operated mainly by remote control.

Instructions:

Hold down Forward key & Back key for 3 seconds start match code, The first LED flicker;

Turn on the car body power now, The first LED lit up,

Match code Success

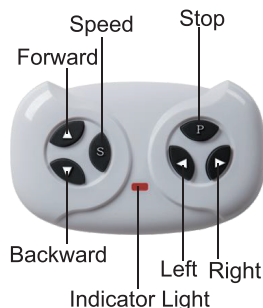
Press “ S ” key set up speed , 1 led lit up is low speed,

2 leds lit up is medium speed, 3 leds lit up is high speed,

Back a car is only low speed

Press “ P ” key hold the brake, All LED flicker

Remoter 10 seconds not run will be standby, Press any key wake up.



Battery Operating Specifications:

Never mix new and old batteries, or different kinds of batteries.

Never mistake positive and negative electrode of battery, or short circuit will happen.

Non-rechargeable batteries are not to be recharged.

Install batteries in a right polarity.

Only adults can recharge or change batteries.

Never make power port' s short circuit happen.

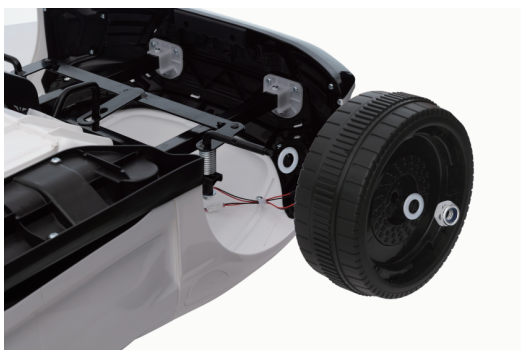
Recharge the battery only when it is taken out of the toy car.

Take exhausted battery out of the toy car and keep it out of Children's reach.

Remove battery screws with a screwdriver, open battery cap as the arrow signals, and in the 2.4G remote control model install two AAA 1.5V batteries in a right polarity.

1. Install the front wheels

First, remove the nut and a gasket from the front axle, then install the wheel, gasket and nut onto the front axle in turn, tighten the nut with a wrench, and finally install the wheel cover on the wheel. Install the front wheel on the other side in the same way



2. Install the rear wheels

First, remove the nut and gasket from the rear axle, then install the wheel, gasket and nut onto the rear axle in turn, tighten the nut with a wrench, and finally install the wheel cover on the wheel. Install the rear wheel on the other side in the same way.



3. Install the steering wheel

First connect the steering wheel cable to the instrument panel, then plug the cable into the cable hole, and finally align the steering wheel with the connector



4. Install the windshield

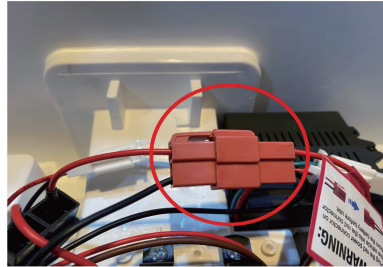
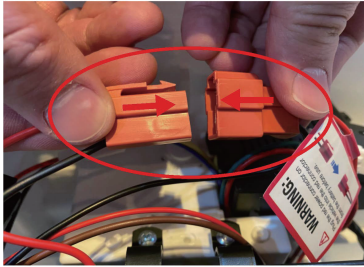
Align the windshield to the body position, and fix the clip to the hole position.



5. Connect the power cord

Connect the power cord to the battery.

Then turn on the power to check the circuits.



6. Install the seat

Align the seat to the position on the body, and lock it with screws.



7. Install the rear view mirrors

Distinguish left mirror from the right one.

Then insert the mirrors into the hole site on the door.





WARNING

The toy is to be assembled by an adult. In unassembled state contain potentially hazardous sharp points, sharp edges and small part, so please keep out of baby's reach.

Not to be used in traffic.

Only adults can install parts and adjust the car, and keep moving parts out of children's reach.

Children under 36 months cannot use the toy car as it has many small parts.

Children must take the seat belt when using the car, and keep the car out of the fire.

Children can use the product only in the company of adults, and the adult cannot leave during the process.

Never let Children stand or play onto the pedal or in the car.

Only adults can complete storage battery charging, and must charge the product before its first use.

Keep such package materials as plastic bags out of children, or they will suffocate or kill children.

Never use parts provided by non-manufacturers. Never let children play with the charger.

The number of connected power by the product can never be over the recommended number.

Notice of use:

Never use the product in such dangerous zones as street, road, slope or drain.

Never change the circuit and additional electric devices.

Never use remote control in rainy days or in the water, never pour water or other liquid into the car, keep the product out of the fire, otherwise the car will be damaged.

Only one child can use the product, and its weight cannot exceed 25KGS.

Turn off the power when not in use and remove battery connector when not using it for a long time.

As the product has battery charger, check whether wire plug shell and other parts are damaged or not, and fix those damaged parts.

The product must be assembled by the adult! Before assembling, screws and pins are dangerous sharp points.

Charging notice:

In charging, put DC Plug into the power socket, put charger into power plug; never use the product during charging it.

The product can be used for one hour, and the charging time is 5-6 hours, exceeding no more than 10 hours.

It is common for charger and storage battery to have not become heated(temperature under 45 degrees)in charging.

Never use the connector with the water, or short circuit will happen.

Use the product's own charger, or cause charger and storage battery to be damaged or short circuit.

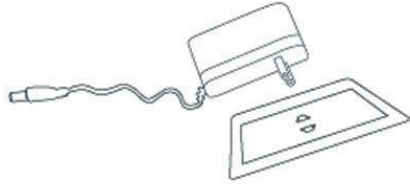
Charge the product when not using it for a long time.

Charging steps are as follows:

Step 1: Find the charge hole behind the cover in the left front fender.

Step 2: Put the charger plug into the plug hole.

Step 3: Connect the charger to the power socket.



Relevant materials: PP plastics, k-carrageenan, generator, battery and iron castings.

Trouble Clearing

Type	Analysis	Solutions
The car can not get started.	Low battery voltage; Protection of electric devices; Failure to press the switch button correctly; Falling of power connector; Battery breakdown; Damage of electric devices; Generator breakdown.	Charge battery fully; Use the car a few minutes later; Use the car according to instructions; Install the connector again; Change battery; Change electric devices; Change generator.
The battery can not be charged.	Falling of battery connector; No charging for the charger; Charger breakdown.	Install the connector again; Plug the charger again; Change the charger.
The car has a short range.	Not full charging of battery; Much-used battery.	Charge fully the battery again; Change the battery.
There appear slight noise and heat of the car in charging.	Chemical reactions.	Normal reactions.
The car has a slow speed.	Much-used battery; No electricity for battery; Overload; Uneven driving surface.	Change the battery; Charge fully the battery again; Reduce the load below 25 kilograms; Drive on uneven surface.

Maintenance and Service

Before use children's parents should check whether charge's wiring, plug, shell and other parts are damaged, and fix those damaged parts.

After using the product for a time, parents should lubricate iron castings with lube, or those castings will get rusted; they should keep the product out of fire and lay it flat in dark places; they should put the product inside the house or cover it with one water-proof cloth in wet weather.

Parents should keep the product out of such hot objects as stove and heater, or its plastic parts may be thawed; they should keep the product out of combustible objects in charging, or the fire may happen.

Parents should clean car surface with one dry cloth, or clean plastic parts with non-waxy furniture polish; they shouldn't clean plastic parts with chemical solutions or clean the car with water; children cannot drive the car in wet or rainy weather, or the car's generator, circuit system and battery will be damaged.

when not using or laying the product, parents should cut off car power, keeping all the switches into "STOP" or "OFF" model.

Parents mustn't use the fuse which doesn't conform with the agreed specifications.

Parents should't change product structure and circuit system, and should have the product checked and fixed by professionals or under the guidance of professionals.



Officially Licensed by AUDI AG

Licensee: Pinghu Qileshi Baby Carrier Co.,Ltd.

(Address:No.1698 Cangdong Road Xincang Town,Pinghu Jiaying,Zhejiang Province,China).

